

Inmagic® DB/TextWorks® v14.5

Installation and Upgrade Notes

This document is intended for new DB/TextWorks installations and sites that are upgrading to version 14.5.

DB/TextWorks is a content management system—a type of database software that enables you to build networked and standalone textbases to manage text, numbers, dates, and electronic images. DB/TextWorks combines traditional database power, including the ability to manipulate data and perform arithmetic calculations, with the ability to handle large amounts of text.

Contents

Inmagic DB/TextWorks	1
System Requirements	2
Before You Begin	2
Installing or Upgrading to DB/TextWorks v14.5	3
Setting the Number of Licensed Users	8
Setting Up Workstations	9
Getting Started with DB/TextWorks	10
Inmagic DB/Text <i>PowerPack Lite</i>	11
Run-time Software	12
Documentation	12

Inmagic DB/TextWorks

Inmagic DB/TextWorks consists of the following products:

- **Inmagic® DB/TextWorks®**. Software to create, search, and manage textbases.
- **Inmagic DB/SearchWorks® (Run-time)**. A standalone, search-only version of DB/TextWorks, which you can distribute for individual use.
- **Inmagic® DB/Text® PowerPack™ Lite**. A set of two services, Checker and Updater, which help automate textbase management tasks.

DB/TextWorks, the Run-time software, and PowerPack Lite are covered in separate sections of this document.

System Requirements

Before you install or upgrade DB/TextWorks, please review the *DB/TextWorks v14.5 Support Matrix*, which is available on the Inmagic Extranet, to confirm that your system is properly configured.

Important! Follow any configuration instructions in that document before installing or upgrading.

Note for Windows Vista, Windows 7, Windows 2008, Windows 2012

How you launch executables and start applications on these operating systems depends on whether User Access Control (UAC) is on or off and whether you have Administrator rights.

- If UAC is on and you have Administrator rights, right-click the executable or menu item, select **Run as Administrator**, and click **Continue** when prompted for permission to continue. If you do not have Administrator rights, you will be prompted to supply an Administrator password in order to continue.
- If UAC is off, you must be logged in as an Administrator. You can double-click executables and launch menu items the same way as in earlier Windows operating systems.

Tip! User Access Control settings are specified in the Control Panel (**User Accounts>User Accounts>Turn User Account Control on or off**).

Before You Begin

- **Exit all Windows applications** before installing DB/TextWorks or running Setup Workstation.
- **Antivirus software.** Temporarily disable any antivirus software before you run the install, and enable it when you are done. If you do not disable it, you may see a message about a malicious script (due to scripts running in Microsoft Windows Installer). You can safely choose to continue the installation.
- **Read-Write access.** You must have full Read-Write access (for example, Administrator access) to the DB/TextWorks installation and Windows System folders.
- **DB/TextWorks serial number.** Locate your DB/TextWorks serial number. You will be asked for the serial number during installation.
- **Troubleshooting.** To resolve issues you may have during installation, you can check the Inmagic Knowledgebase, which is available on the Inmagic Extranet, or contact Inmagic Technical Support by email (support@inmagic.com) or phone (800-229-8398, Press 3).
- **If you are upgrading**

In addition to the items above, follow the instructions below:

- **Back up existing textbases.** Do a complete backup of all your DB/TextWorks textbases before upgrading to v14.5.
- **Back up DBTLABEL.INI.** Back up or rename your DBTLABEL.INI file if you have made any changes to it. The DBTLABEL.INI file contains settings for the label forms that appear for selection in the Form Designer. DB/TextWorks v14.5 installs a new file, which overwrites the previous settings. You can merge your changed settings with DB/TextWorks v14.5 after the installation completes.
- **Exit the software.** Be sure all DB/TextWorks users have exited the software.
- **You must run Setup Workstation** from each machine that will run the software. This is required, after upgrading to v14.5. Please see “Setting Up Workstations” on page 9.
- Look for sections marked “**Note for Upgrades**” throughout these instructions

Installing or Upgrading to DB/TextWorks v14.5

Your license agreement permits you to install each purchased copy of DB/TextWorks in one location, such as your local hard drive, a network workstation, or a network server.

Note: Setup detects whether you are logged in as Administrator. If you are not, a dialog box opens so you can switch users. The installation will not proceed unless you are logged in as an Administrator.

To install DB/TextWorks

1. Be sure you have read “Before You Begin” on page 2, especially if you are upgrading.
2. On the server that will run DB/TextWorks, download the DB/TextWorks ZIP file, unzip it to a temporary folder, then double-click **Setup.EXE**. Do not attempt to install the software on a remote server by executing the file locally.

Note: If you have trouble launching the executable, see “Note for Windows Vista, Windows 7, Windows 2008, Windows 2012” on page 2.

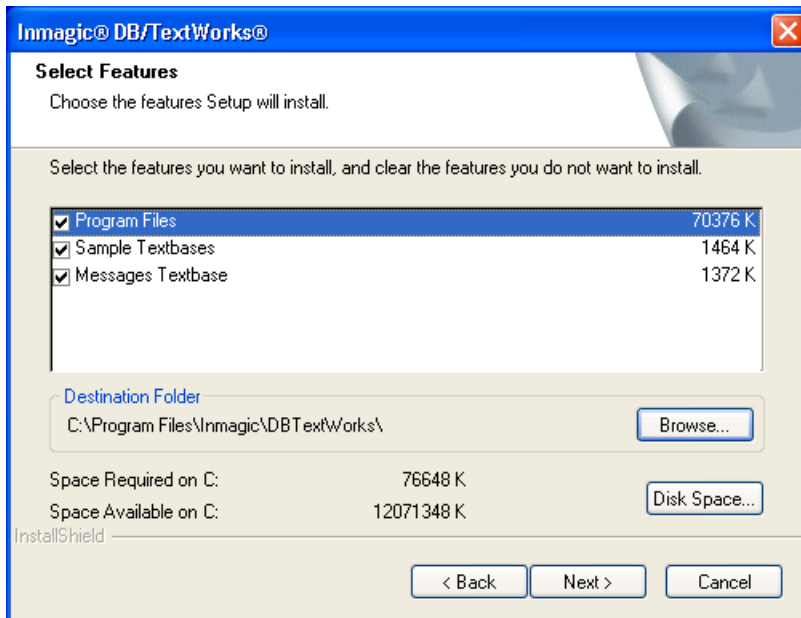
3. On the Welcome dialog box, click **Next**.
4. On the Installation Options dialog box, click the **Install** button.
5. On the License Agreement dialog box, read the license agreement and respond appropriately.
6. On the Customer Information dialog box, enter your name, the company name, and the DB/TextWorks serial number, then click **Next**.

Note for upgrades: Your serial number should be filled in automatically.

7. On the Select Features dialog box, check or clear the features you want:
 - ◆ **Program Files.** Installs DB/TextWorks.
 - ◆ **Sample Textbases.** Installs the *Sample1* and *Sample2* textbases (unchanged from the previous version).
 - ◆ **Messages Textbase.** Installs the Messages textbase (*DBTMSG*), which explains errors and messages that may occur in DB/TextWorks (unchanged from the previous version).

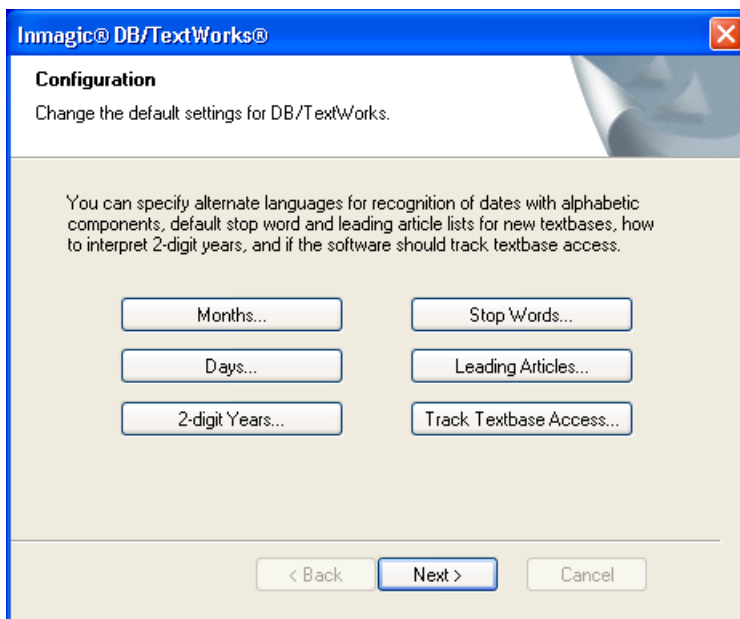
If you do not want to use the default **Destination Folder** (C:\Program Files\Inmagic\DBTextWorks\), click **Browse** to change it.

Note for upgrades: To successfully upgrade, you must select the same folder as the earlier version of DB/TextWorks. Otherwise, a new installation will occur and the previous version will not be upgraded. When a message asks if you want to overwrite the earlier DB/TextWorks files, click **Yes**.

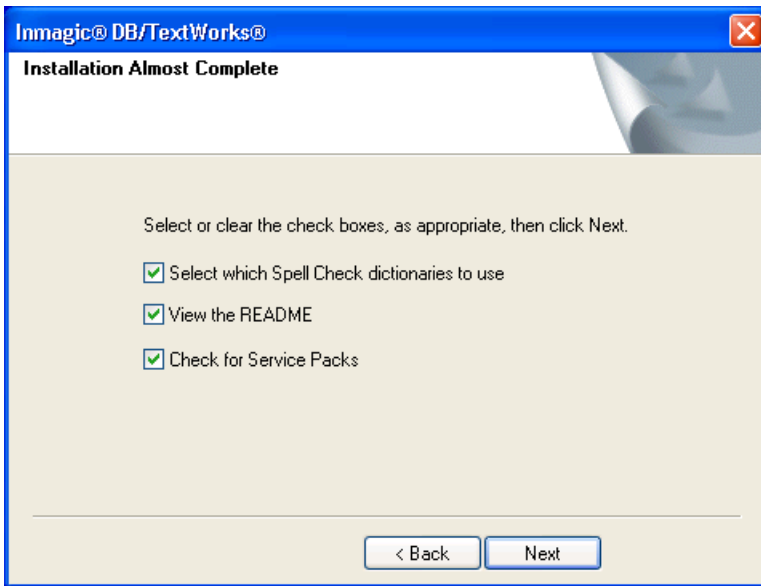


Click **Next**.

8. Wait while Setup installs the files.
9. On the Configuration dialog box, click the buttons to configure DB/TextWorks. In most cases, you can accept the default settings. Click **Next**. **Note:** If you want to change the settings later, run Setup from the DB/TextWorks installation folder and click the **Configure** button.

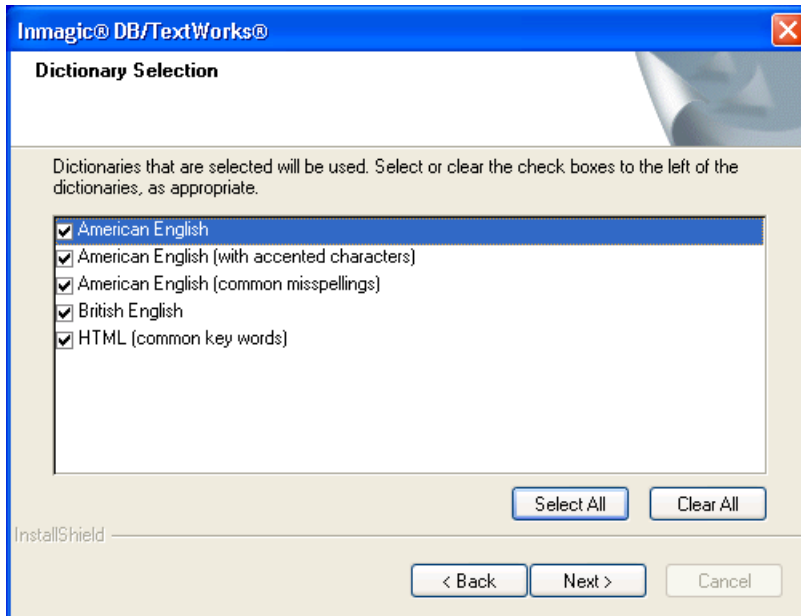


10. On the Installation Almost Complete dialog box, check or clear the boxes, as appropriate. Click **Next**.

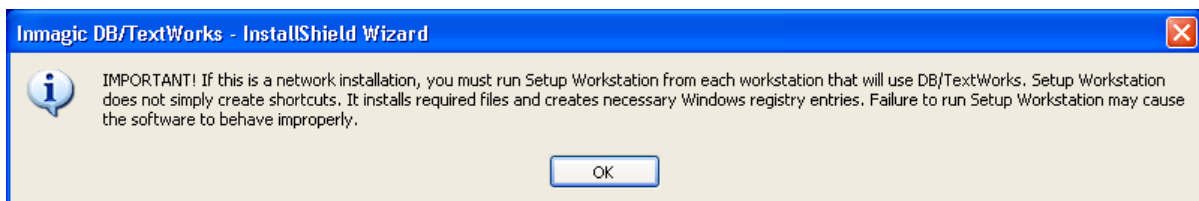


11. If you selected **Select which Spell Check dictionaries to use**, the Dictionary Selection dialog box appears. Check or clear the boxes to specify which dictionaries you want to use, then click **Next**.

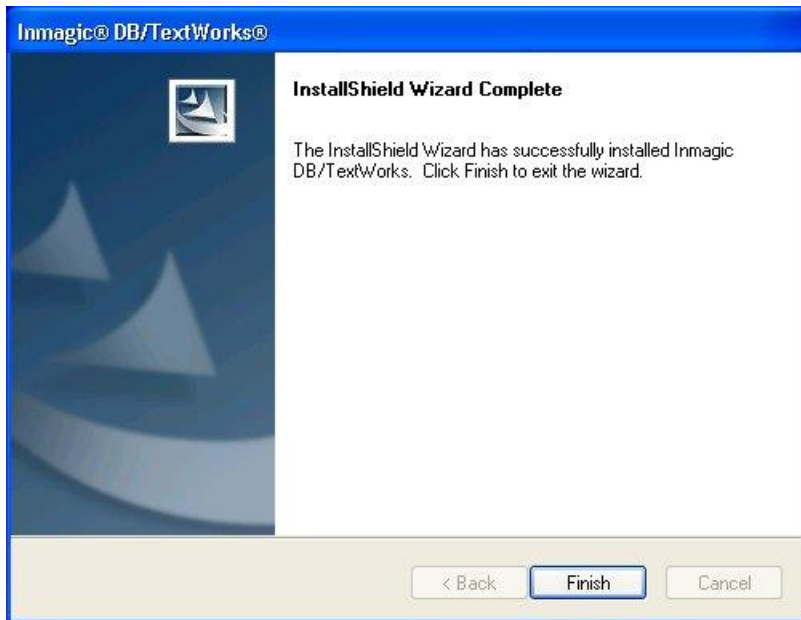
For example, users in the United States may want to clear the **British English** check box, so the Spell Checker will catch such words as “colour” and “centre.” If you do not plan on editing text with embedded HTML tags, you may want to clear the **HTML (common key words)** check box. The dictionary selections you make are recorded in the Windows Registry on the local machine.



12. If you checked **View the README**, read or print the file, then close it to continue with the installation.
13. A message reminds you that if this is a network installation, you must run Setup Workstation from each machine that will run the software. Click **OK**.



14. Once Setup completes, click **Finish**.



Note: If Setup determines that you have to reboot your computer, the InstallShield Wizard Complete dialog box provides you with an option to restart your computer when you click the **Finish** button. If this is the case, you **must** reboot your computer to complete the installation/upgrade process.

- If you purchased a multi-user license agreement, set the number of licensed users; see page 8.
 - If you installed DB/TextWorks on a network server, or if you upgraded to v14.5, go to each user's machine and run Setup Workstation; see page 9. You can also use SMS to do this.
-

Note for upgrades: It is required that you run Setup Workstation. Please see "Setting Up Workstations" on page 9.

15. If you selected **Check for Service Packs**, locate the DB/TextWorks section to determine if there are any service packs that should be applied.

Setting the Number of Licensed Users

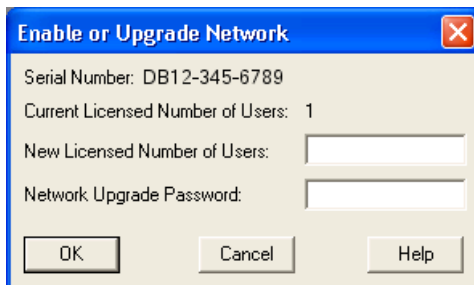
If you purchased a multi-user network license to share DB/TextWorks on a network, you must specify the number of licensed users after installing DB/TextWorks. Your **Network Upgrade Password** is supplied separately.

Note for upgrades: If you are upgrading from an earlier version and did not receive a new network upgrade password, use the password supplied with your earlier version of DB/TextWorks.

1. Log in to your network using an account (such as Administrator) that has full Read-Write access to the DB/TextWorks installation folder.
 2. Make sure no one else is running DB/TextWorks, then start DB/TextWorks but do not open a textbase.
-

Note: If you have trouble starting the application, see “Note for Windows Vista, Windows 7, Windows 2008, Windows 2012” on page 2.

3. Choose **Tools>Enable or Upgrade Network** to open the Enable or Upgrade Network dialog box.



4. Type the new number of licensed users and the password provided by Inmagic, then click **OK**.
-

Important! Type the total number of licensed users that you expect to have, not the number you are adding. For example, if you have a 20-node network version and you purchased 10 additional nodes, type 30.

5. While it is not required, we recommend that if you have any existing textbases, open each one and edit the textbase structure to increase the Maximum Users (choose **Maintain>Edit Textbase Structure**, then click the **Maximum Users** button) to match or exceed the number of licensed users.

Setting Up Workstations

If you installed DB/TextWorks on a network server, or if you upgraded to v14.5, you must set up each user's computer to run the software, using either of the methods below.

Note for upgrades: It is required that you run Setup Workstation after installing v14.5. This version was built with newer Microsoft tools, with the result that newer Microsoft DLLs are needed to support DB/TextWorks. These must reside on the workstations, and workstation setup will ensure their presence. If they are not located on the workstation when DB/TextWorks is started after the upgrade, an error message such as this will appear: *The application failed to start because the application configuration is incorrect. Reinstalling the application may fix this problem.*

To use SMS to do Setup Workstation

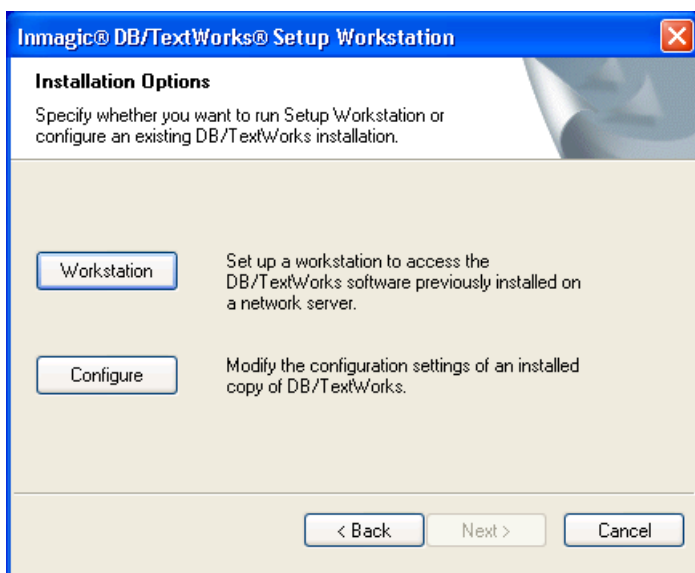
1. Share the DB/TextWorks installation folder on the machine hosting DB/TextWorks. This destination location was specified in step 7 of "To install DB/TextWorks" on page 3.
2. From the SMS subfolder of the DB/TextWorks installation folder, edit the Inmagic DBTextWorks Setup Workstation .MSI file with an MSI editing tool such as Wise, InstallShield, or Orca.
3. Go to the Property table and edit the property DBTEXTWORKSDIR to point to your DB/TextWorks installation folder (for example, \\ServerName\Vol1\Inmagic\DBTextWorks\). Note that the path you enter for this value must end in a trailing slash.
4. Use your SMS program to do Setup Workstation on your client machines.

To manually do Setup Workstation

1. Share the DB/TextWorks installation folder on the machine hosting DB/TextWorks. This destination location was specified in step 7 of "To install DB/TextWorks" on page 3.
2. On each workstation that will access DB/TextWorks, log in with Administrator privileges.
3. From where you installed DB/TextWorks (for example, \\ServerName\Vol1\Inmagic\DBTextWorks), double-click **Setup.EXE**.

Note: If you have trouble launching the executable, see "Note for Windows Vista, Windows 7, Windows 2008, Windows 2012" on page 2.

4. On the Welcome dialog box, click **Next**.
5. On the Installation Options dialog box, click the **Workstation** button.



6. Wait while Setup installs the files.

7. On the Installation Almost Complete dialog box, select or clear the check boxes, as appropriate.
 - **Select which Spell Check dictionaries to use.**
 - **View the README.**

Click **Next**.

8. If you checked **Select which Spell Check dictionaries to use**, the Dictionary Selection dialog box opens with a list of the available dictionaries. Specify which dictionaries you want to use, then click **Next**. For example, users in the United States may want to clear the **British English** check box, so the Spell Checker will catch such words as “colour” and “centre.” If you do not plan on editing text with embedded HTML tags, you may want to clear the **HTML (common key words)** check box. The dictionary selections you make are recorded in the Windows Registry on the local machine.
9. If you checked **View the README**, read or print the file, then close it to continue.
10. When the InstallShield Wizard Complete dialog box opens, click **Finish**.

Note: If Setup determines that you have to reboot your computer, the InstallShield Wizard Complete dialog box provides you with an option to restart your computer when you click the **Finish** button. If this is the case, you **must** reboot your computer to complete Setup Workstation.

Repeat for each additional workstation that will run DB/TextWorks.

Getting Started with DB/TextWorks

To get started, choose **Programs>Inmagic Applications>DBTextWorks** from the Windows Start menu. Depending on the options selected during Setup, you may see some or all of the following commands:

- **DBTextWorks.** Starts DB/TextWorks. Note that you will have to set the user file path the first time you open DB/TextWorks with a particular login.
- **Messages Textbase.** Opens the Messages textbase (*DBMSG*), which explains errors and other messages you may see while running DB/TextWorks.
- **Online Help.** Opens the online help for DB/TextWorks.
- **README.** Opens the README file.
- **Sample Textbases.** Provides access to the sample textbases (*Sample1* and *Sample2*), which you can use to learn how to use DB/TextWorks.
- **Setup Workstation.** Runs the Setup Workstation program, which can be used to configure DB/TextWorks or set up workstations. Note that you cannot install the software using this command. To install files, run the Setup program.

Inmagic DB/Text *PowerPack Lite*

Inmagic DB/Text *PowerPack Lite* is a set of two services that system administrators can use on DB/TextWorks textbases to help automate management and maintenance tasks.

- **Inmagic® DB/Text® *PowerPack™ Checker***. This service analyzes textbase integrity and optionally fixes some types of problems.
- **Inmagic® DB/Text® *PowerPack™ Updater***. This service posts deferred updates automatically and continuously using background processing.

Installing DB/Text *PowerPack Lite*

Note: Please check the Inmagic Extranet to see what version of *PowerPack* is the latest. If you do not have the latest version, please install or upgrade. If you already have the latest version, you do not need to install or upgrade this product again.

Install the services on a machine that that **will not need to be rebooted frequently**, which has access to the DB/TextWorks textbases that you will maintain.

Please check the *DB/TextWorks v14.5 Support Matrix*, on the Inmagic Extranet, for supported operating systems and to see if there are any additional requirements.

1. Log in as Administrator.
2. If you are upgrading *PowerPack Lite*, be sure that the services are not running. (Stop them by using the Services option through the Windows Computer Management window.)
3. If you have not already done so, download the *PowerPack Lite* ZIP file from the Inmagic Extranet, and unzip it to a temporary folder:
 - We suggest that you read the **ReadmePP.HTM** file, which may contain important information.
 - From that same folder, run **Setup.EXE**.
4. Follow the prompts to install the services.

Note for upgrades: You must select the same folder as the earlier version of *PowerPack Lite* (for example: C:\Program Files\Inmagic\PPLite) to successfully upgrade. If you do not select the same folder, a new installation will be installed and your previous version will not be upgraded.

Using the *PowerPack Lite* Services

You must be logged in as Administrator to run the services. Each service runs separately, and has its own dialog box and help file. To configure and run the services, go to the Windows Start menu and:

- Choose **Programs>Inmagic Applications>PowerPack>Checker**.
- Choose **Programs>Inmagic Applications>PowerPack>Updater**.

Run-time Software

DB/SearchWorks Run-time software is a standalone, search-only version of DB/TextWorks that you can distribute to allow outside users to search your textbases.

When you go to the DB/TextWorks download page, you can download a zip file containing a folder called Runtime. In that folder is the install kit for the Run-time version. At your discretion, you can provide the contents of that folder to end-users, who can run Setup from that folder to install the Run-time software locally.

Note: The Run-time software is not intended for network use; it is intended to distribute your textbases to a stand-alone user at another location. The Run-time software requires exclusive access to the textbase and permits only one instance of the software to run at a time.

You are allowed to copy and distribute the Run-time software, together with any textbases that you create, according to the terms of the Run-time Master License Agreement. To ensure that the Run-time software will search textbases using the same rules as the ones with which the textbases were built, you should also distribute a copy of DBText.INI with the copied Run-time software.

End users who install the Run-time software will be able to open your textbases and search them. They will not be able to make any changes to records or the textbase structure or create their own textbases.

To learn how to distribute the Run-time software and copies of your textbases, see the DB/TextWorks online help. Your distribution rights are described in the DB/TextWorks License Agreement and in the "Run-time Master License – Additional Terms and Conditions" topic in the online help.

Documentation

For a list of documentation available for DB/TextWorks, please see the README file. Electronic copies of the DB/TextWorks documentation set were installed with the product, in the Documentation subfolder of the main installation folder. Documentation is also provided on the Inmagic Customer Extranet.

Copyright © 2008 – 2013 Inmagic. All rights reserved.

Inmagic®, the Inmagic logo, DB/Text®, DB/TextWorks®, BiblioTech®, and BiblioTech PRO® are registered trademarks; and Inmagic.net™, BibSpeed™, IntelliMagic™, and PowerPack™ are trademarks of Inmagic.

Other brand and product names are trademarks or registered trademarks of their respective holders. Use of any other product name does not imply endorsement of that product by Inmagic.

The information in this document is subject to change without notice and should not be construed as a commitment by Inmagic, which assumes no responsibility for any errors that may appear in this document.

WARRANTY

INMAGIC MAKES NO WARRANTY, EXPRESS OR IMPLIED, INCLUDING BUT NOT LIMITED TO THE WARRANTIES OF MERCHANTABILITY AND FITNESS. INMAGIC. SHALL NOT BE LIABLE FOR ANY LOST PROFITS OR ANY OTHER INCIDENTAL OR CONSEQUENTIAL DAMAGES. IN PARTICULAR, INMAGIC. SHALL HAVE NO LIABILITY FOR ANY DATA OR PROGRAMS STORED OR USED WITH THIS PRODUCT, INCLUDING THE COSTS OF RECOVERING SUCH PROGRAMS OR DATA.

U.S. GOVERNMENT: If Licensee is acquiring the software on behalf of any unit or agency of the U.S. Government, the following shall apply:

(a) For units of the Department of Defense: RESTRICTED RIGHTS LEGEND: Use, duplication or disclosure by the Government is subject to restrictions as set forth in subparagraph (c)(1)(ii) of the Rights in Technical Data Clause at DFARS 252.227-7013. (b) For any other unit or agency: NOTICE - Notwithstanding any other lease or license agreement that may pertain to, or accompanying the delivery of, the computer software and accompanying documentation, the rights of the Government regarding its use, reproduction and disclosure are as set forth in Clause 52.227-19(c)(2) of the FAR.

Contractor/Manufacturer is Inmagic, 600 Unicorn Park Drive, Fourth Floor, Woburn, MA 01801, U.S.A.

Questions regarding any Inmagic product should be addressed to Inmagic.

Inmagic
600 Unicorn Park Drive
Fourth Floor
Woburn, MA 01801 U.S.A.
Telephone: 781-938-4444 or 800-229-8398
Fax: 781-938-4446
<http://www.inmagic.com>

Technical Support Assistance	Email: support@inmagic.com Phone: 800-229-8398, Press 3
General Company, Product, Services Questions	Email: CustomerSvc@inmagic.com Phone: 800-229-8398, Press 1
Sales, Product Pricing, Custom Solution Questions	sales@inmagic.com
Product Feature Requests	wishlist@inmagic.com

1.2.2014