

Inmagic[®] DB/Text[®] *WebPublisher PRO* v14

Installation and Upgrade Notes

Thank you for purchasing Inmagic[®] DB/Text[®] *WebPublisher PRO*. This document is for new *WebPublisher PRO* installations and for sites that are upgrading to version 14.

WebPublisher PRO lets you add, update, and/or delete records in Inmagic[®] DB/TextWorks[®] textbases from a Web browser, making your textbases interactive over an intranet, extranet, or the Internet. XML support allows you to integrate your DB/TextWorks textbases with other applications and create interactive forms using standard third-party tools.

Please check the Inmagic Knowledgebase for information, troubleshooting, and additional documentation. You can access the knowledgebase through the Inmagic Customer Extranet. You can also contact Inmagic Technical Support by email (support@inmagic.com) or telephone (800-229-8398, press 3).

Contents

Order of Installation.....	2
System Requirements.....	2
<i>WebPublisher PRO</i> Virtual Directories	2
Before You Begin	2
Upgrading from version 12 or Version 13.....	2
Upgrading from version 11	3
Installing <i>WebPublisher PRO</i> v14	3
Setting Windows Permissions.....	8
Testing <i>WebPublisher PRO</i>	10
Documentation	10

Order of Installation

To use *WebPublisher PRO*, you need two separate products:

- Inmagic DB/TextWorks
- *WebPublisher PRO*

It does not matter which application you install first (but we recommend the order shown above), and the applications can be on the same or different machines. To install DB/TextWorks, please see the installation notes provided with that product.

Important! After installing both products, copy the DBText.INI file that is in the DB/Text installation folder to the *WebPublisher PRO* installation folder. Whenever you make date-related changes to the DB/Text version of this file (either directly or via DB/TextWorks Setup), you should copy the modified file to the *WebPublisher PRO* installation directory, so the two copies remain identical.

System Requirements

Important! For system requirements, including supported server operating systems and IIS versions, please see the *WebPublisher PRO v14 Support Matrix*, which is available on the Inmagic Extranet. Note that you should not install *WebPublisher PRO* on a server hosting SharePoint.

WebPublisher PRO Virtual Directories

WebPublisher PRO requires two virtual directories, which will be created by the installation program:

- **dbtw-wpd.** Mapped to the *WebPublisher PRO* installation folder.
- **InmagicBrowse.** Mapped to the InmagicBrowse subfolder in the *WebPublisher PRO* installation folder. This is used and required for the index and validation list browsing.

You will be prompted to select the website where the installer should create these virtual directories during the installation. If the installer fails to create these virtual directories, an error message will be displayed. Refer to the Inmagic Knowledgebase or contact Inmagic Technical Support for assistance.

Before You Begin

These procedures apply to new installations as well as upgrades:

- **Exit all Windows applications.**
- **Read-Write access.** Make sure you have full Read-Write access (for example, Administrator access) to the *WebPublisher PRO* installation and Windows System folders.
- **WebPublisher PRO serial number.** Locate your *WebPublisher PRO* serial number. You will be asked for the serial number during installation.

Upgrading from version 12 or Version 13

1. Follow the instructions in *Before You Begin*.
2. Perform the following tasks:
 - **Have all users exit WebPublisher PRO.**
 - **Back up the current installation.**
 - **Note the IIS settings for the current installation** (Web Site Name, Web Site Security, Web Extension Type of ISAPI or CGI), as you will be asked for them when you upgrade.
 - **Note the current installation folder**, which you should specify as the destination folder during the upgrade.

3. Install *WebPublisher PRO* v14, as described in this document.
4. After confirming that the upgrade was successful, remove the backup (if it is on the same machine), to avoid potential conflicts.

Upgrading from version 11

1. Follow the instructions in *Before You Begin*.
2. Perform the following tasks:
 - **Have all users exit *WebPublisher PRO*.**
 - **Back up the current installation.**
 - **Note the IIS settings for the current installation** (Web Site Name, Web Site Security, Web Extension Type of ISAPI or CGI), as you will be asked for them when you upgrade.
 - **Note the current installation folder**, which you should specify as the destination folder during the upgrade.
3. Install *WebPublisher PRO* v14, as described in this document. The Setup program will detect the existing version and prompt you to uninstall it. Follow the prompts to uninstall the current version, then continue with the new installation.
4. After confirming that the upgrade was successful, remove the backup (if it is on the same machine), to avoid potential conflicts.

Installing *WebPublisher PRO* v14

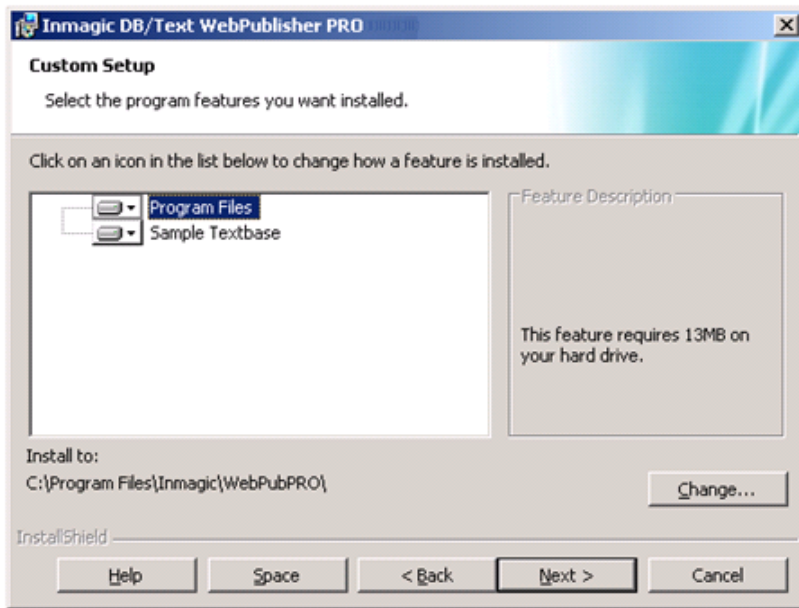
If you are upgrading an existing version, follow the instructions in the appropriate “Upgrading” section before running the v14 installer. If you are performing a new installation, follow the instructions in *Before You Begin*.

To install *WebPublisher PRO* v14

1. Log in to the Web server with an account that is a member of the Local Administrators group.
2. Download and unzip the *WebPublisher PRO* ZIP file to a temporary directory, then double-click **Setup.exe** to launch the installation program.
3. On the Welcome dialog box, click **Next**.
4. If you are missing prerequisites, Setup will display a notification message. You must exit Setup, install the missing components, and then run Setup again.

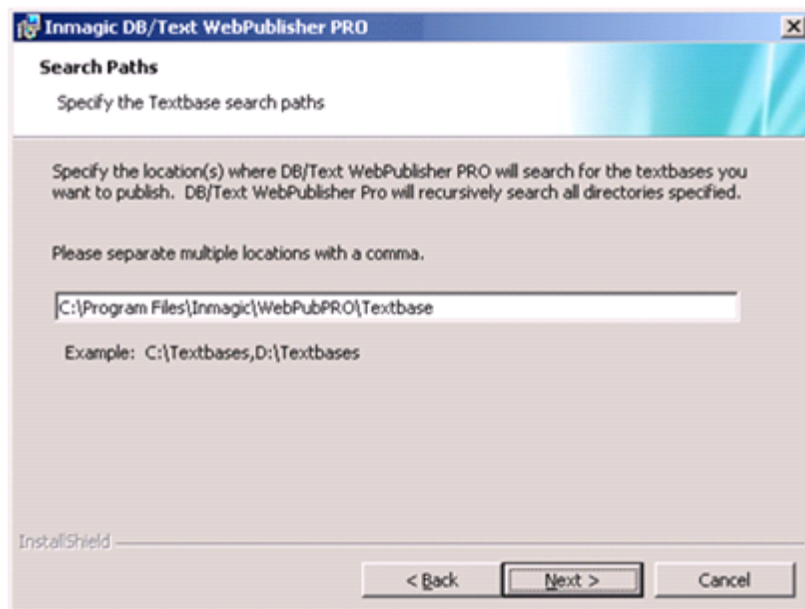
If the installer detects a previous version that can be upgraded, follow the onscreen instructions to uninstall the existing version. Settings from the previous version will be retained. When the uninstall completes, click **Next** and proceed to step 10 (Website Configuration dialog box).

5. On the License Agreement dialog box, read the license agreement and respond appropriately.
6. On the Customer Information dialog box, enter your name, the company name, and the *WebPublisher PRO* serial number, then click **Next**.
7. On the Custom Setup dialog box, select which features to install. You may change the destination folder by clicking **Change** and selecting a new path. The default path is C:\Program Files\Inmagic\WebPubPRO. **Note:** If you are upgrading, you must install to the destination folder where the *WebPublisher PRO* that you are upgrading was previously installed. Click **Next** to proceed.



8. On the Search Path(s) dialog box, specify one or more locations where you want *WebPublisher PRO* to search for the textbases you will publish. When necessary, *WebPublisher PRO* can recursively search all subfolders under those locations when a query is submitted.

Note: You must give the account used by *WebPublisher PRO* Full Control access to any folder in which a textbase you want to modify using *WebPublisher PRO* is located. If the dbtw-wpd virtual directory will use Anonymous access, the account defaults to **IUSR**. (Note that for Windows Server 2003, it defaults to **IUSR_<machine>**.) If the virtual directory will use Basic or Integrated Windows Authentication, the account is the user's login.



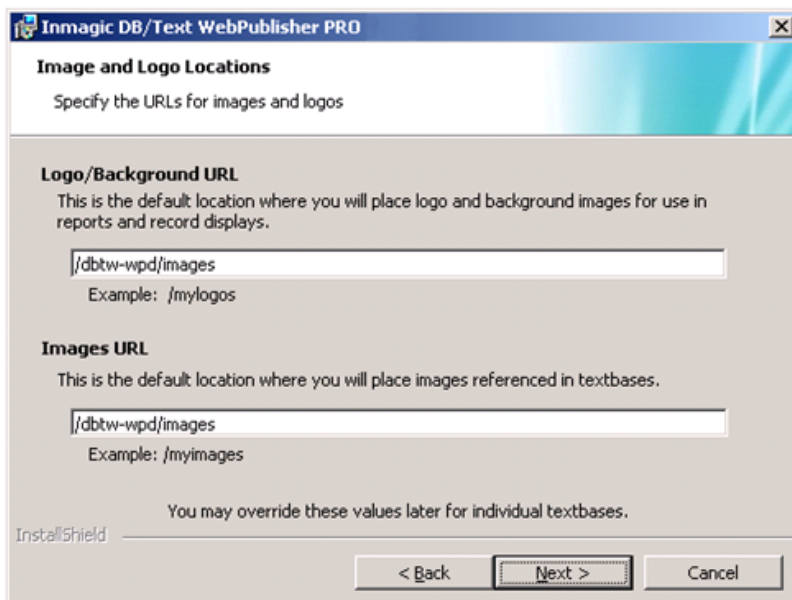
Use a comma to separate multiple locations. If you specify a machine other than the Web server, use the Universal Naming Convention (UNC) folder name instead of a drive letter. For example:

```
\\SERVER2\TBS,C:\WEBPUB\TEXTBASE\C:\DATA
```

The locations you specify are written to an initialization file called DBTWPUB.INI, located in the installation folder. Later, you can edit that file to add or change locations.

Click **Next**.

9. On the Image and Logo Locations dialog box, type the URLs for default Web virtual directories where you will place logo and background image files used on reports and record displays, and the Images URL for images referenced in textbases.



The URLs you specify do not have to exist and will not be created automatically. They are simply text strings that *WebPublisher PRO* will insert in front of image file names. For example, if you specify `/MYLOGOS/` as the URL, *WebPublisher PRO* will construct URLs such as `/mylogos/acme.gif`.

The URLs you specify will be written to an initialization file called `DBTWPUB.INI`, located in the installation folder. Later, you can edit that file to add or change locations.

For example, if you keep images in the `MYLOGOS` subfolder under the server root folder, type `/MYLOGOS/`. The leading slash (`/`) makes the URL relative to the current server root. Specify the full path (for example, `http://hostname/mylogos/`) only if the Web server where the images reside is different from the installation server.

Note: If you plan to keep images in a subfolder under the *WebPublisher PRO* installation folder, use the virtual directory name in the URL. For example, type `/DBTW-WPD/MYLOGOS/`.

Click **Next**.

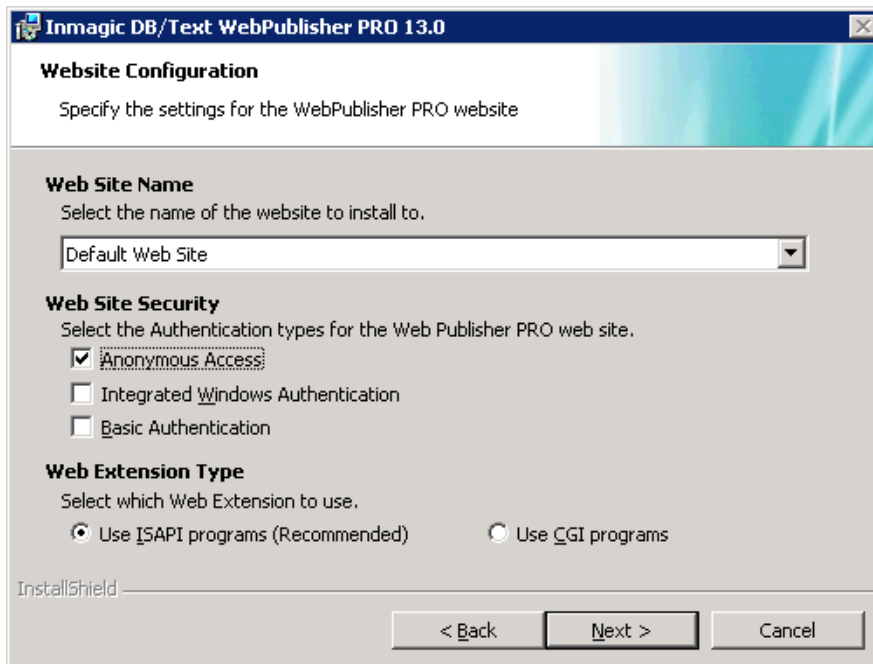
10. On the Website Configuration dialog box, specify the settings to be used for the *WebPublisher PRO* application, then click **Next**.

Note for Upgrades: Be sure to specify the same Web Site Name, Web Site Security, and Web Extension Type (ISAPI or CGI) that you are currently using.

- **Web Site Name:** Select the Web site where you want to create the virtual directories (`dbtw-wpd` and `InmagicBrowse`).
- **Web Site Security:** Select the authentication method(s) to use with *WebPublisher PRO*. Note that **Integrated Windows Authentication** and **Basic Authentication** are available only if those components were installed in IIS 7. For more information, see [http://technet.microsoft.com/en-us/library/cc733010\(WS.10\).aspx](http://technet.microsoft.com/en-us/library/cc733010(WS.10).aspx).

Note: If the textbases are on a different machine than the Web server, then the **Anonymous User** account `IUSR` (or `IUSR_<machine>` for Windows Server 2003) cannot be used. You must use a valid domain account with the proper security permissions.

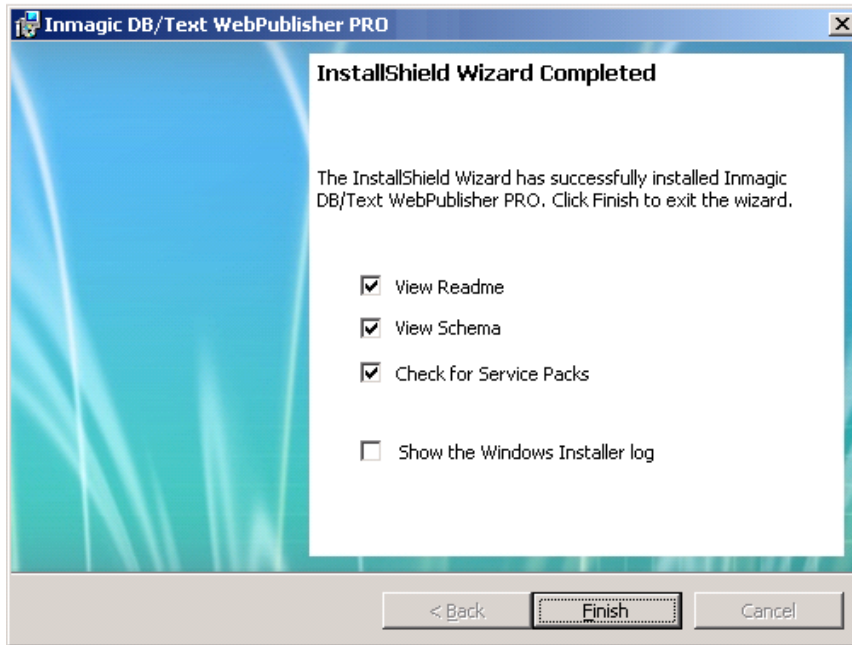
- **Web Extension Type:** Specify whether to use the ISAPI or CGI interface to *WebPublisher PRO*, then click **Next**. We strongly recommend ISAPI. (Note that support for both versions is installed. If you need to switch later, run `ISAPI.BAT` in the `JSCRIPT` subfolder to switch to using ISAPI, or run `CGI.BAT` to switch to using CGI. Then enable the appropriate Web service extension in IIS.)



11. On the Ready to Install the Program dialog box, click **Install** to start the installation. (You can also click **Back** to review or change settings, or **Cancel** to cancel.)

12. On the InstallShield Wizard Completed dialog box, select or clear the check boxes, as appropriate.
Note: We recommend that you view the readme and check for service packs.
 - **View Readme**
 - **View Schema**
 - **Check for Service Packs**
 - **Show the Windows Installer log** (this option does not appear for all operating systems)

Click **Finish**.



13. If you selected any of the check boxes in the previous step, read or print the information that appears.
14. Go to the next section, “Setting Windows Permissions”, to set the permissions needed to use *WebPublisher PRO*.

Setting Windows Permissions

If you set Web Site Security to **Integrated Windows Authentication** or **Basic Authentication** in the Website Configuration dialog box (step 10), you must set the following Windows permissions.

If you selected **Anonymous Access** and are using an account other than the IUSR, you also need to adjust these permissions.

If you set Web Site Security to **Anonymous Access** and use the IUSR account, you only have to make the adjustments specifically noted below.

1. QSETS subfolder:

- a. Right-click the QSETS subfolder under the installation folder (C:\Program Files\Inmagic\WebPubPRO\QSETS\) and choose **Properties** from the shortcut menu.
- b. On the **Security** tab, select the appropriate **Group or user name** account and **Allow Full Control**. It is assumed the **Group or user name** account already exists. If it does not, you must add it before proceeding.

Anonymous Access: If you are on a Windows 2003 Server machine and you selected **Anonymous Access** in the Website Configuration dialog box (step 10), you may have to add the IIS_WPG account to the QSETS subfolder and also give it Full Control access.

- c. Click **OK**.

2. SAMPLE folder:

- a. If you plan to add, edit, and/or delete records in the sample *Cars* textbase, right-click the SAMPLE subfolder under the installation folder (C:\Program Files\Inmagic\WebPubPRO\SAMPLE\) and choose **Properties** from the shortcut menu.
- b. On the **Security** tab, select the appropriate **Group or user name** account and **Allow Full Control** to the SAMPLE subfolder.
- c. Click **OK**.

3. Textbase folders:

- a. Give the appropriate **Group or user name** account Read access to any folders containing textbases that will be searched, or Full Control if *WebPublisher PRO* will be updating the textbases. Right-click each textbase folder (for example: C:\Program Files\Inmagic\WebPubPRO\Textbase\), choose **Properties**, and use the **Security** tab to **Allow** access.

Anonymous Access: You must give the account used for **Anonymous Access** Full Control to any folder containing a textbase that you plan to modify over the Web.

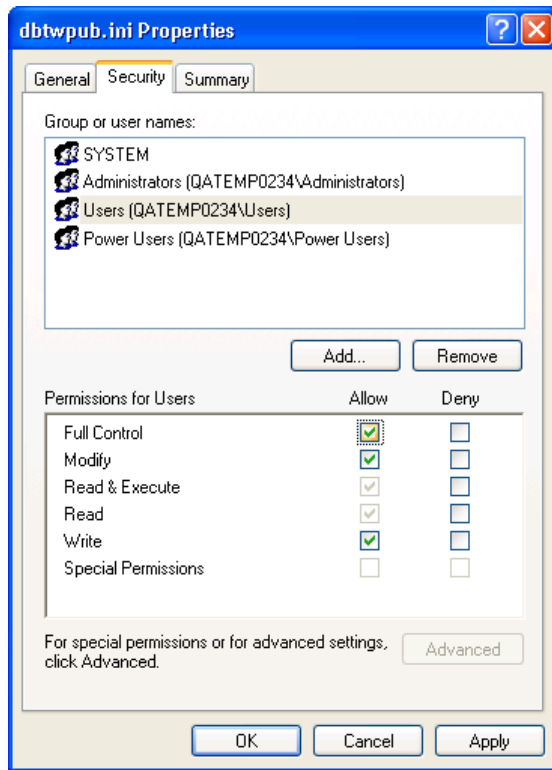
- b. Click **OK**.

4. DBTWPUB.INI file:

- a. Locate the DBTWPUB.INI file in the installation folder, right-click it, and choose **Properties** from the shortcut menu.
- b. On the **Security** tab, select the appropriate **Group or user name** account and **Allow Full Control**.

Note: If the textbases are on a different machine than the Web server, a local account cannot be used. You must use a valid domain account with the proper security permissions.

See the screen capture below.



c. Click **OK**.

You have now completed setting the Windows permissions. Your final step is to test the installation, as described in the following section.

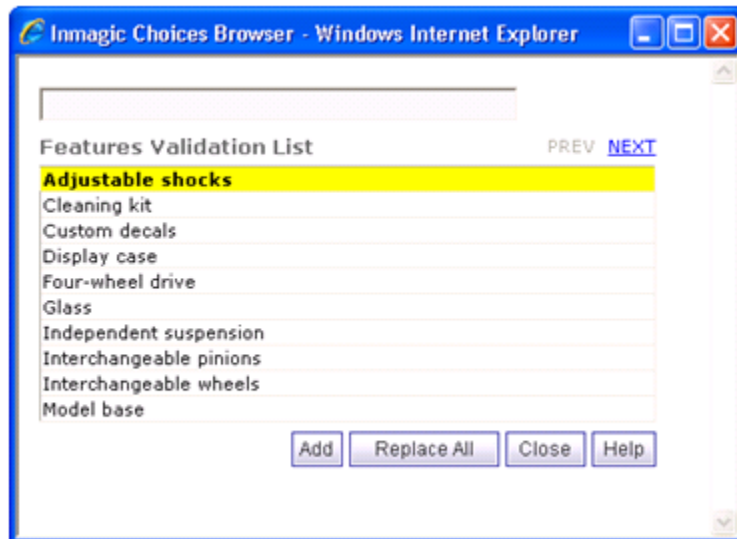
Testing *WebPublisher PRO*

We recommend that you perform the following steps to make sure that *WebPublisher PRO* is accessible. If any of the steps fails, there may be a problem with the installation or Web (IIS) setup. If an error message appears, check the Inmagic Knowledgebase, which is available through the Inmagic Customer Extranet. Please make a note of the exact text of the message or print the page in case you need to contact Inmagic Technical Support.

1. Point your Web browser to <http://WebServerName/dbtw-wpd/sample/carsqs.htm>. Fill in the name of your Web server where *WebPublisher PRO* was installed. The DBTW-WPD virtual directory was created when you installed *WebPublisher PRO*.

Note for IE users: If you installed *WebPublisher PRO* on Windows Server 2008, and you are using Internet Explorer, the browser may display a message indicating that intranet settings are turned off by default. To adjust this setting, choose **Tools>Internet Options**. On the Security tab, select the **Local intranet** zone, then click the **Sites** button. On the Local intranet dialog box, clear the **Automatically detect intranet network** box and then select all of the other check boxes. Click **OK** twice to exit.

2. On the Search Cars page, type an asterisk (*) in the **Model Type: Assembled or Kit?** box, then click the **Submit Query** button.
3. On the search results page, select **Prices (edit links)** from the drop-down list.
4. Click the first **Edit Record** link (in the **1935 Ford** row).
5. Click the **Features** link. The figure below shows how the Inmagic Choices Browser should appear.



6. Close the Inmagic Choices Browser.
7. Click the **Submit Record** button—you do not have to make any changes to the record. Verify that the “Your record was saved.” message appears.

Documentation

For a list of *WebPublisher PRO* documentation, see its README file, which is installed in the Documentation subfolder of the main installation folder. Additional documentation is available on the Inmagic Customer Extranet.

Copyright © 2005 - 2013 by Inmagic (a subsidiary of SydneyPLUS International Library Systems). All rights reserved.

Inmagic®, the Inmagic logo, DB/Text®, DB/TextWorks®, BiblioTech®, and BiblioTech PRO® are registered trademarks; and Inmagic.net™, BibSpeed™, IntelliMagic™, and PowerPack™ are trademarks of Inmagic.

Other brand and product names are trademarks or registered trademarks of their respective holders. Use of any other product name does not imply endorsement of that product by Inmagic.

The information in this document is subject to change without notice and should not be construed as a commitment by Inmagic, which assumes no responsibility for any errors that may appear in this document.

WARRANTY

INMAGIC MAKES NO WARRANTY, EXPRESS OR IMPLIED, INCLUDING BUT NOT LIMITED TO THE WARRANTIES OF MERCHANTABILITY AND FITNESS. INMAGIC SHALL NOT BE LIABLE FOR ANY LOST PROFITS OR ANY OTHER INCIDENTAL OR CONSEQUENTIAL DAMAGES. IN PARTICULAR, INMAGIC SHALL HAVE NO LIABILITY FOR ANY DATA OR PROGRAMS STORED OR USED WITH THIS PRODUCT, INCLUDING THE COSTS OF RECOVERING SUCH PROGRAMS OR DATA.

U.S. GOVERNMENT: If Licensee is acquiring the software on behalf of any unit or agency of the U.S. Government, the following shall apply:

(a) For units of the Department of Defense: RESTRICTED RIGHTS LEGEND: Use, duplication or disclosure by the Government is subject to restrictions as set forth in subparagraph (c)(1)(ii) of the Rights in Technical Data Clause at DFARS 252.227-7013. (b) For any other unit or agency: NOTICE - Notwithstanding any other lease or license agreement that may pertain to, or accompanying the delivery of, the computer software and accompanying documentation, the rights of the Government regarding its use, reproduction and disclosure are as set forth in Clause 52.227-19(c)(2) of the FAR.

Contractor/Manufacturer is Inmagic, 600 Unicorn Park Drive, Fourth Floor, Woburn, MA 01801, U.S.A.

Questions regarding any Inmagic product should be addressed to Inmagic.

Inmagic
600 Unicorn Park Drive
Fourth Floor
Woburn, MA 01801 U.S.A.
Telephone: 781-938-4444 or 800-229-8398
Fax: 781-938-4446
<http://www.inmagic.com>

Contact Inmagic

Technical Support Assistance	Email: support@inmagic.com Phone: 800-229-8398, Press 3
General company, product, and services questions	Email: CustomerSvc@inmagic.com Phone: 800-229-8398, Press 1
Sales, product pricing, and custom solution questions	sales@inmagic.com
Product feature requests	wishlist@inmagic.com

6/25/13